



MCR 2017

FELIX DELVAL


Software engineer at Magento

@fe_lix_

Follow the Magento order management
down the rabbit hole

UK.MAGETITANS.COM

#MageTitansMCR  @MageTitans



Follow Magento Order Management down the rabbit hole



Félix Delval

Architect – Magento Order Management



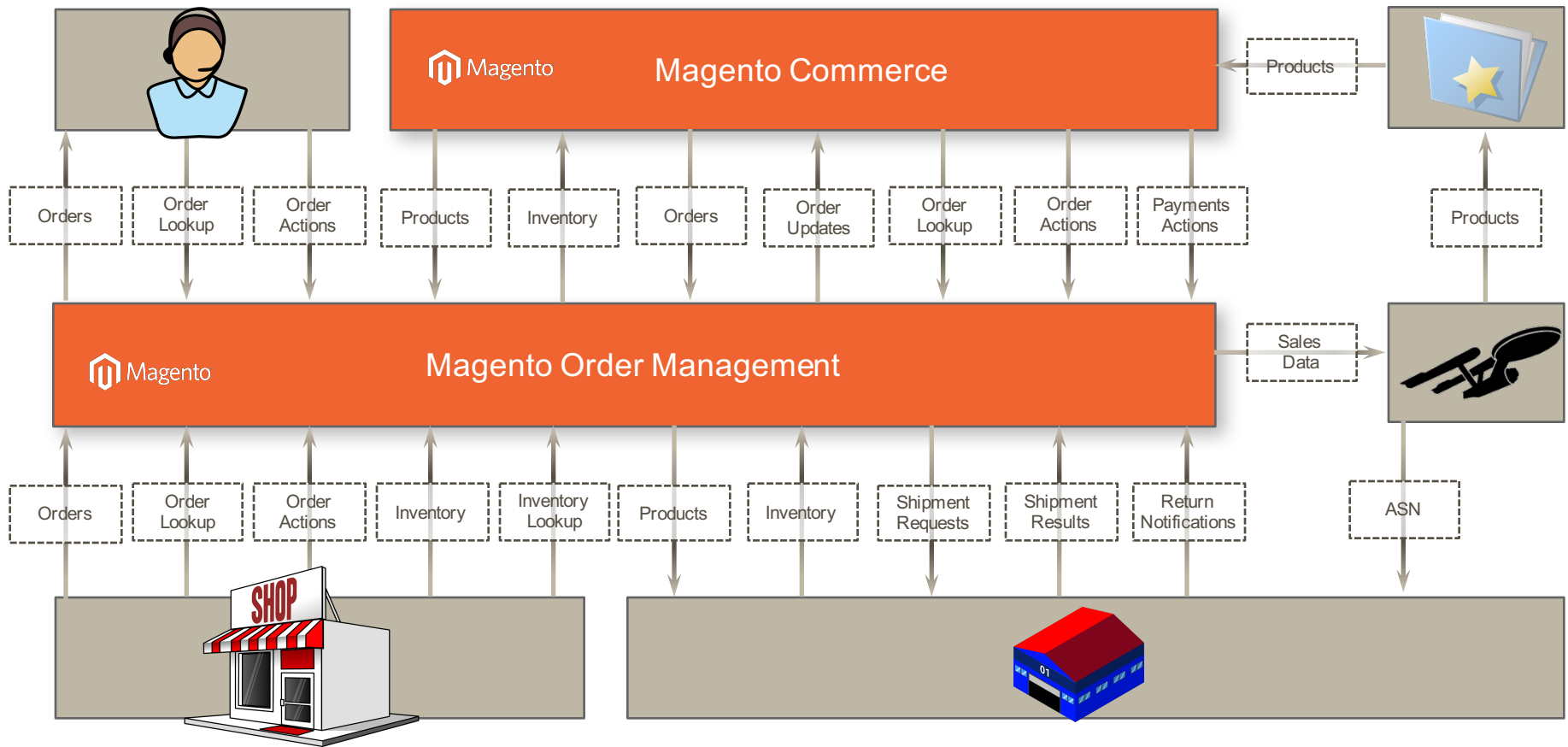
@fe_lix_

The program

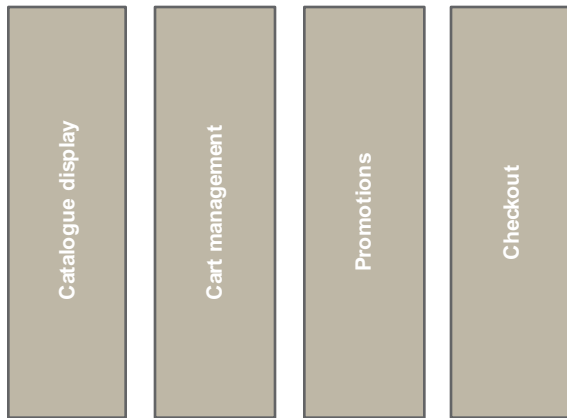
- Brief overview of what is order management
- Survival guide of the API
- The concept of integration
- How message get processed internally

What is order management?

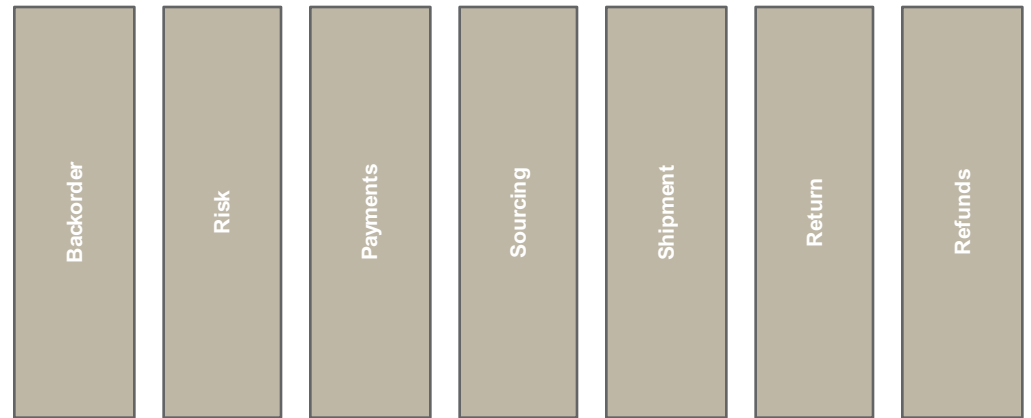
Why an order manager?




The order life cycle

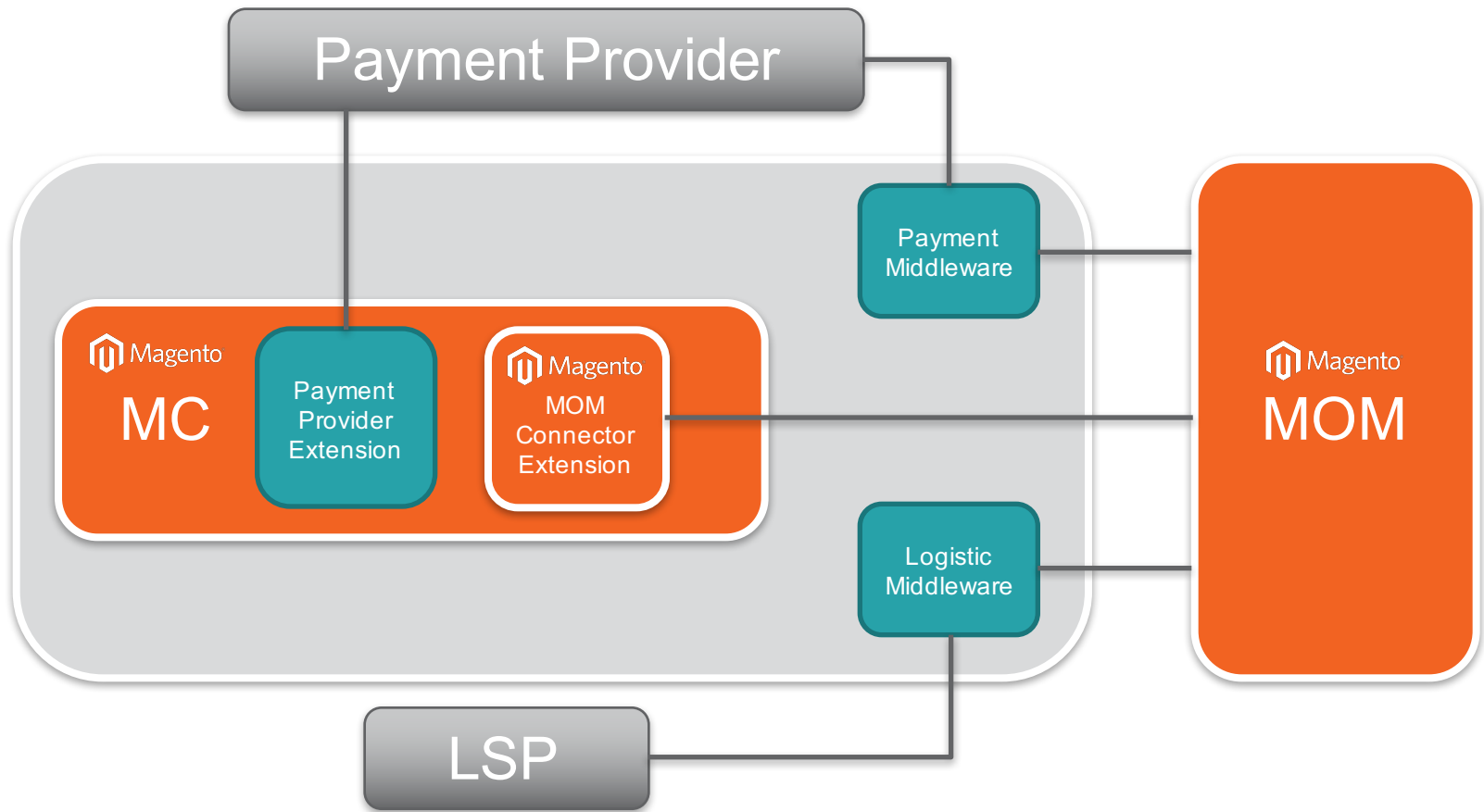


 **Magento Commerce**



 **Magento Order Management**

An example setup



Order Management API

A quick glance

- JSON-RPC 2.0 over HTTP
 - <http://www.jsonrpc.org/specification>
- Authentication through OAuth
- Message language is defined by specifications:
 - <http://omsdocs.magento.com/en/specifications>
- Three types of messages :
 - Commands
 - Events
 - Query

JSON-RPC message structure

```
{
  "jsonrpc": "2.0",
  "method": "magento.inventory.source_stock_management.update",
  "params": {
    "snapshot": {
      "source_id": "WAREHOUSE1",
      "mode": "DELTA",
      "created_on": "2017-09-05T13:03:54+02:00",
      "stock": [
        {
          "sku": "SKU123",
          "quantity": 100
        }
      ]
    }
  }
}
```

Service
name

Message
body

JSON-RPC responses

All went fine! It's a 200!

```
{
  "jsonrpc": "2.0",
  "id": 1,
  "result": null
}
```

Houston, there was a problem! It's a 200!

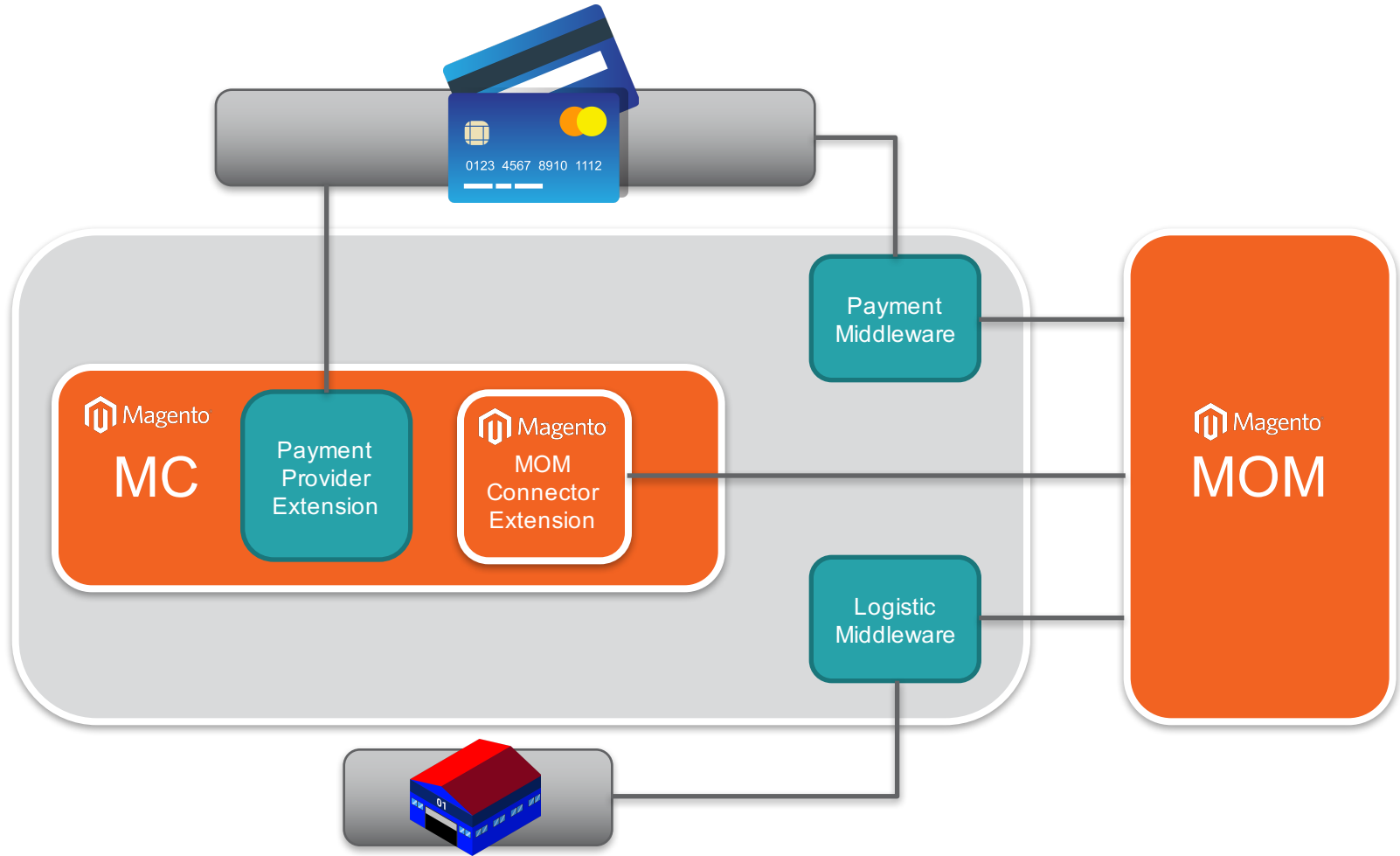
```
{
  "jsonrpc": "2.0",
  "id": 1,
  "error": {
    "code": -32700,
    "message": "Parse error"
  }
}
```

Authentication process

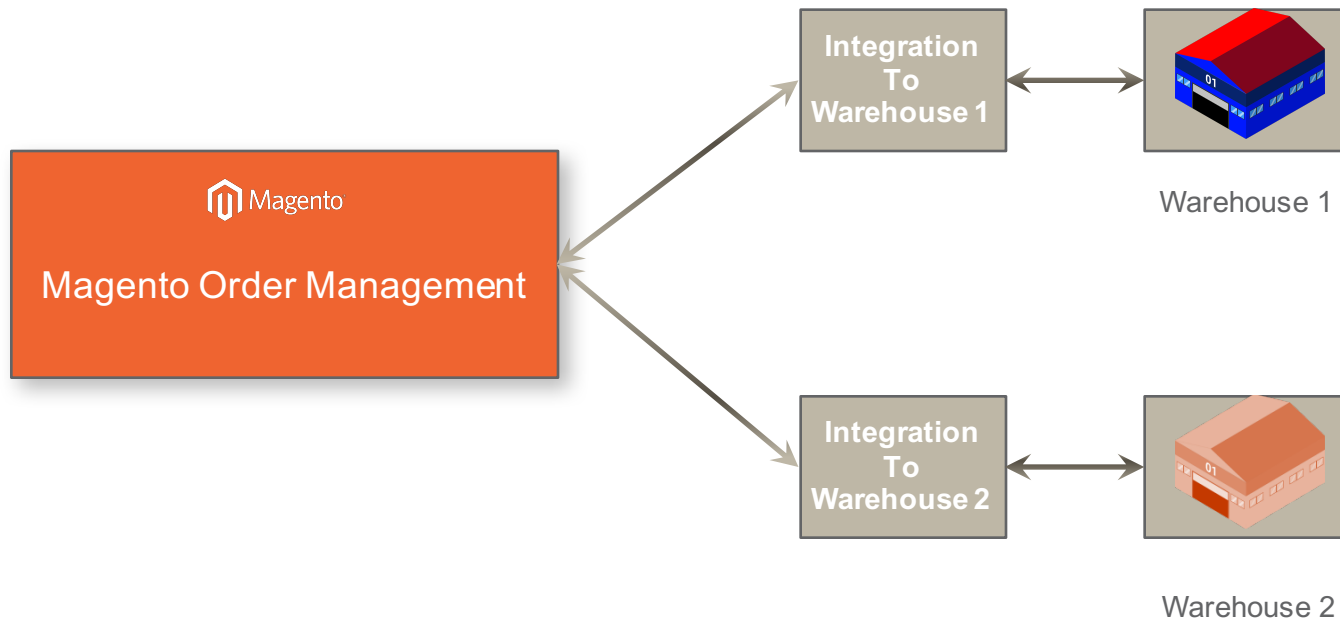
```
$ curl -X POST https://auth.mcom.magento.com/oauth/token \  
  -F grant_type=client_credentials \  
  -F client_id=CLIENT-ID \  
  -F 'client_secret=CLIENT-SECRET'  
  
{  
  "access_token": "QlhjQclLI0TSS8UcHms4pCLUugq2Aris654HknyH",  
  "token_type": "Bearer",  
  "expires_in": 3600  
}  
  
$ curl -X POST https://api.mcom.magento.com/luma/ -H'Authorization: Bearer TOKEN' -d  
'{  
  "jsonrpc": "2.0",  
  "method": "magento.service_bus.remote.register",  
  "params": {  
    "id": "warehouse-integration-example",  
    "url": https://warehouse-integration.mom/api  
  }  
}'
```

Integrations

What is an integration



Warehouse management contract



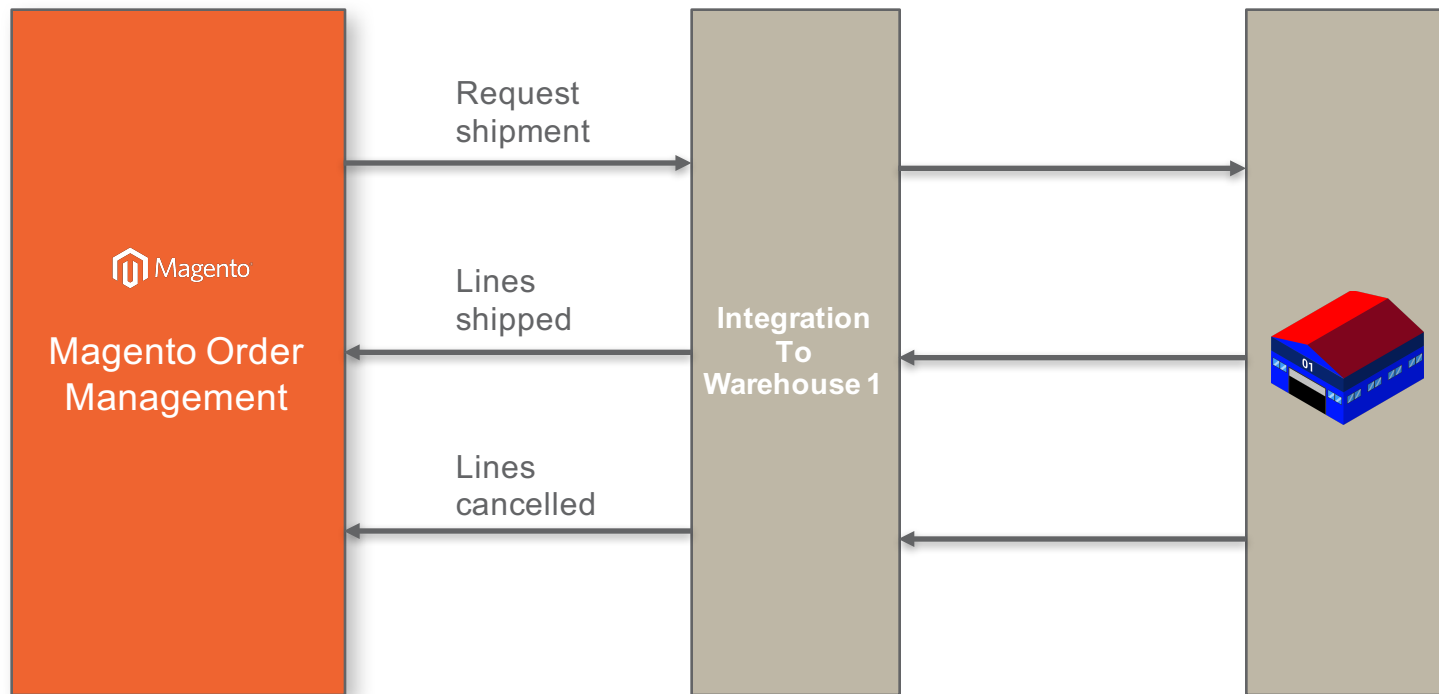
Registering a new integration

```
$ curl -X POST https://api.mcom.magento.com/luma/ -H'Authorization: Bearer TOKEN' -d
'{
  "jsonrpc": "2.0",
  "method": "magento.service_bus.remote.register",
  "params": {
    "id": "warehouse-integration-example",
    "url": https://warehouse-integration.mom/api,
    "contracts": [
      "magento.logistics.warehouse_management"
    ]
  }
}'
```

Warehouse management has three service:

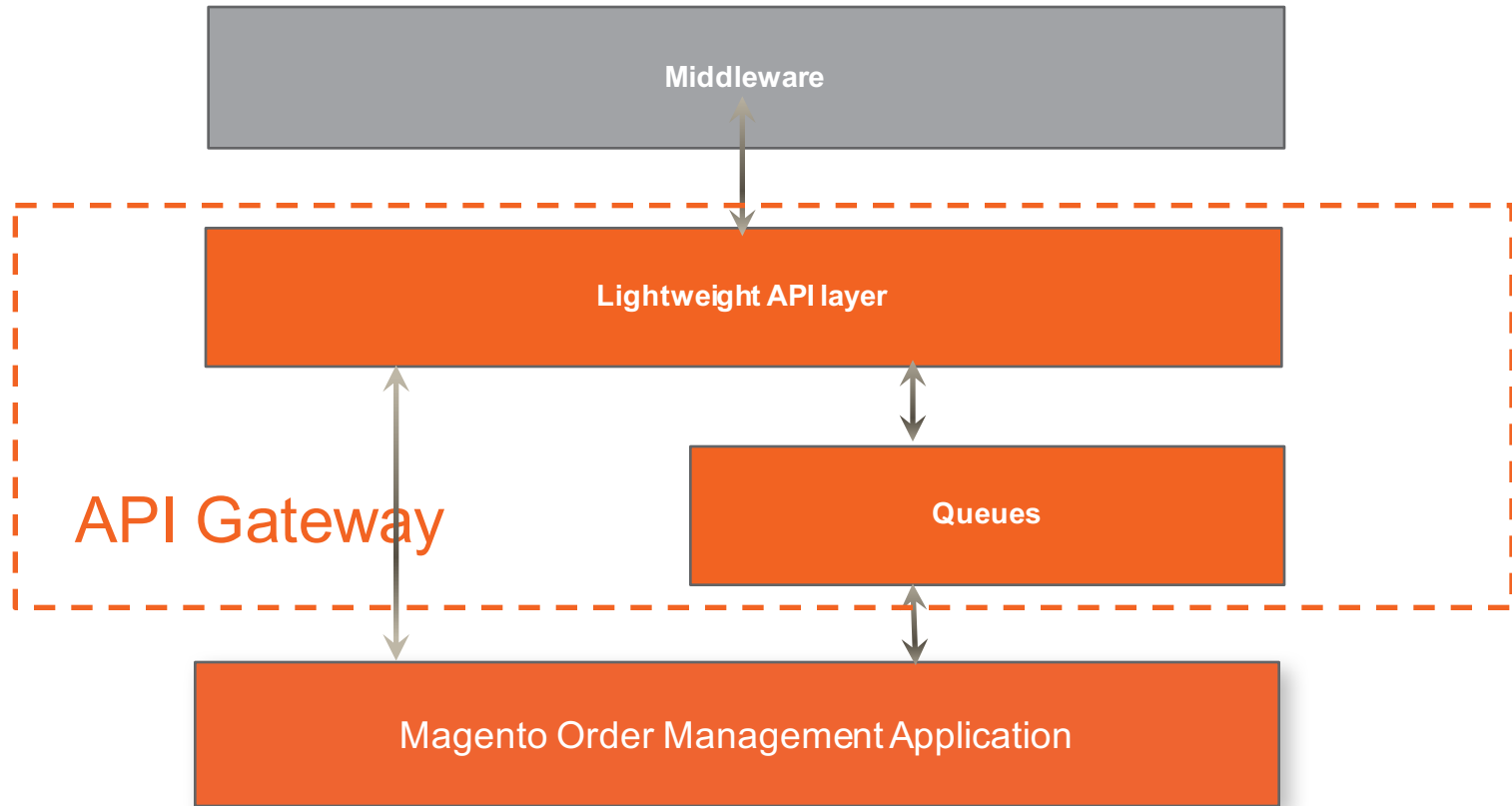
- Request shipment
- Lines shipped (event)
- Lines cancelled (event)

A warehouse integration

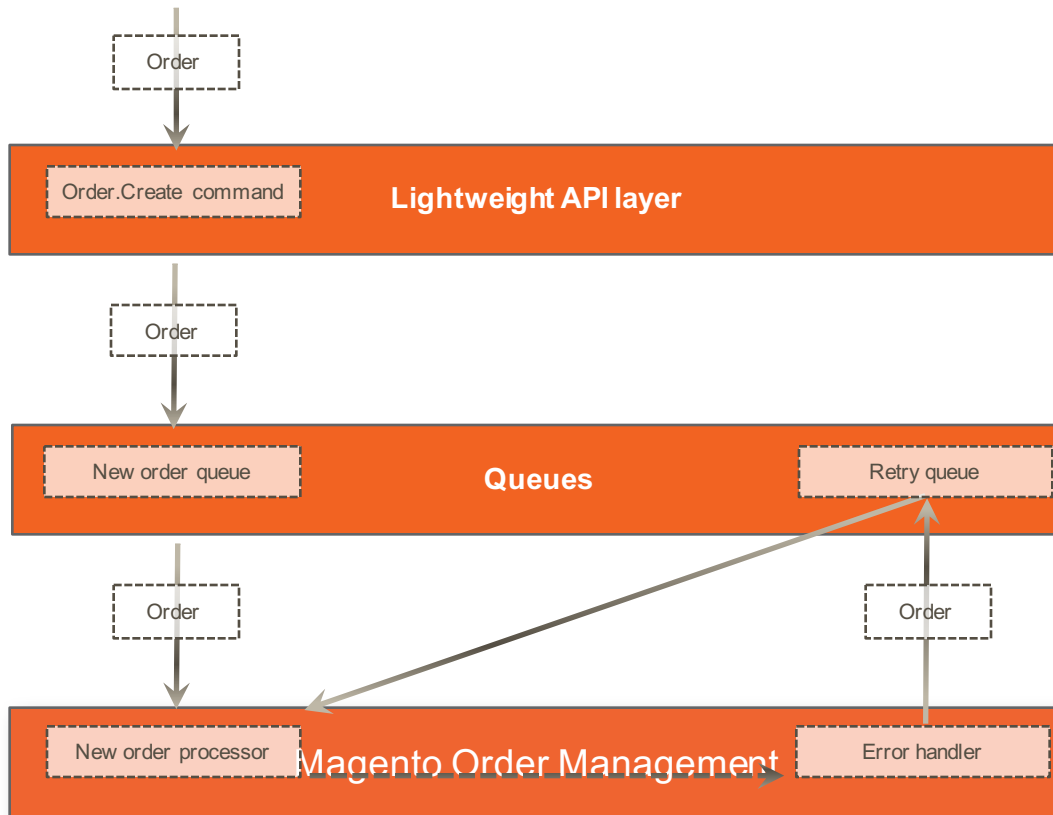


Through the looking glass!

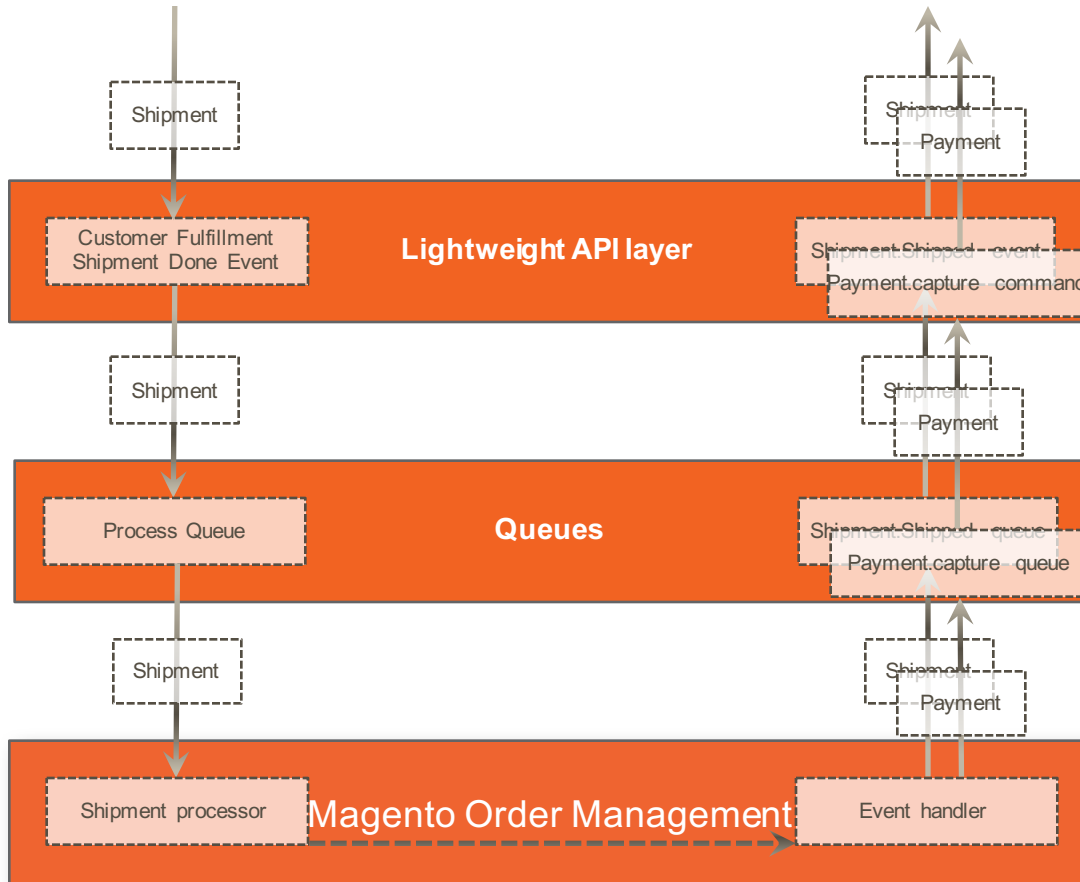
The layers



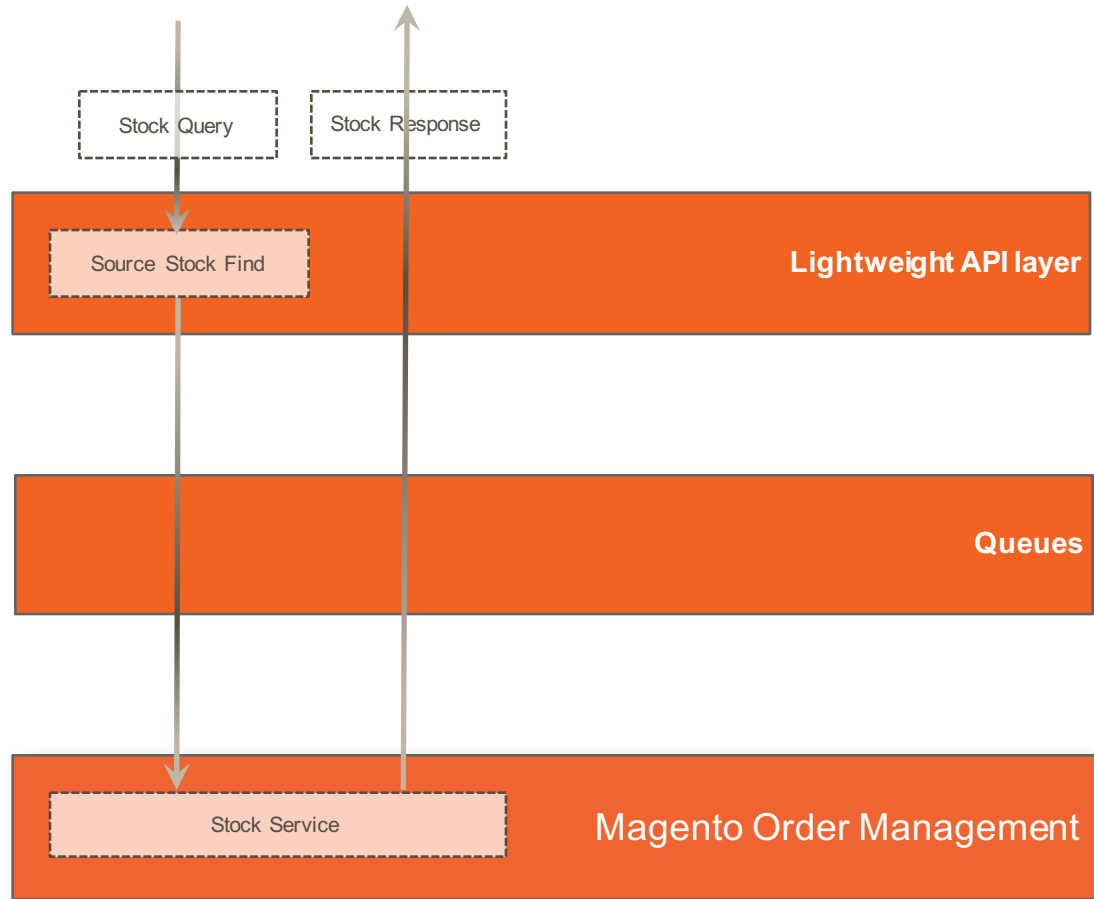
An asynchronous command



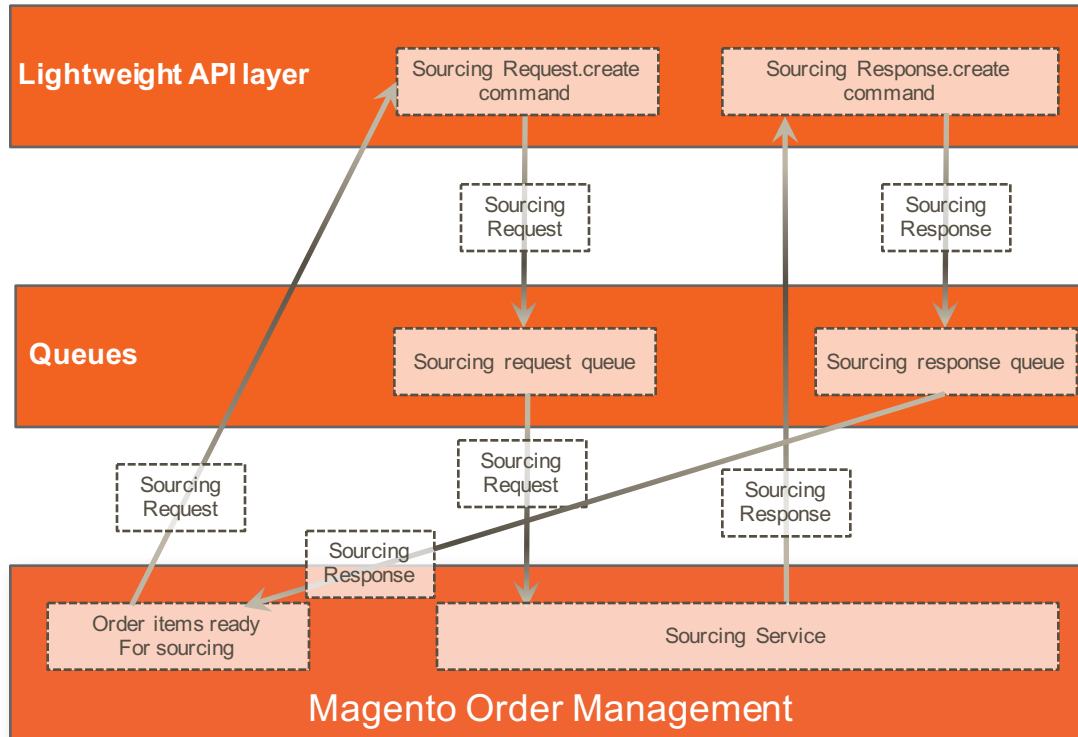
Events!



A query



We also use them internally



Under the hood

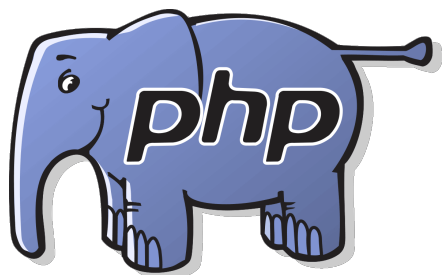
GitHub



git



amazon
web services



HashiCorp
Terraform

ORACLE®



Java™



VAGRANT



Symfony



redis



kibana



elastic



docker

Thank you!
Any Questions?